

Customer :

customer

Customer part :

customer part

Comment :

Comment

S1=2.16

S2=2.95

Tmax=459

Tp S2=498.0

PI=0.42

HI=121

Sample =1628.10

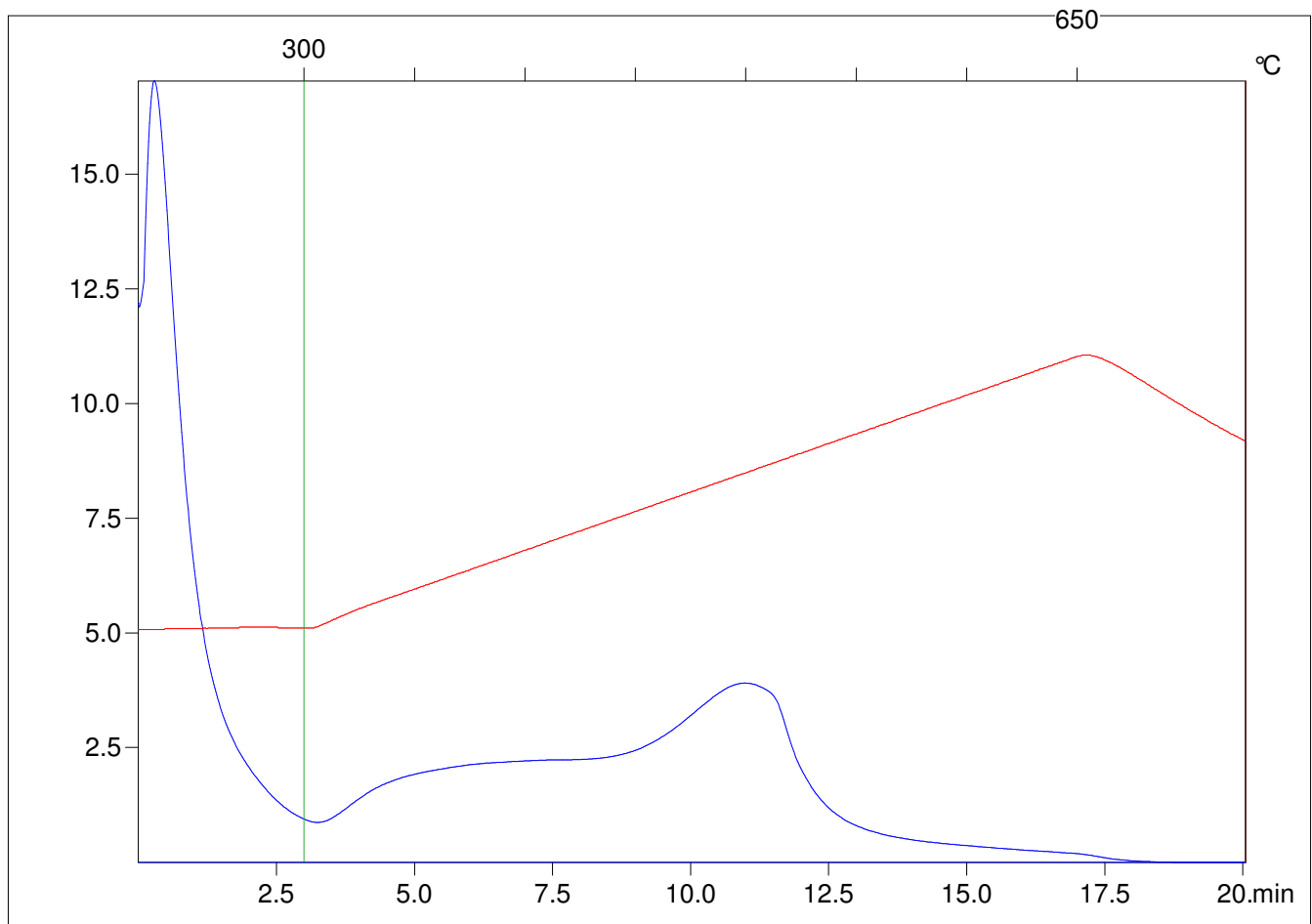
Method =Bulk Rock

Cycle=Basic

KFID(10\*9)=1444

Qty =71.0

TOC=2.43



C:\VINC\PK1792\PK015.R00 : FID pyrolysis graphic

State

Pyro Status

Oxi Status